

Putting Crossref Metadata into Context

Vanessa Fairhurst
Community Outreach Manager
vfairhurst@crossref.org
@NessaFairhurst



Members —> Crossref

Basic metadata: titles; author names; ISSNs/ISBNs, abstracts, references

Funding Information, Funder identifiers, award numbers

License Information, License URIs

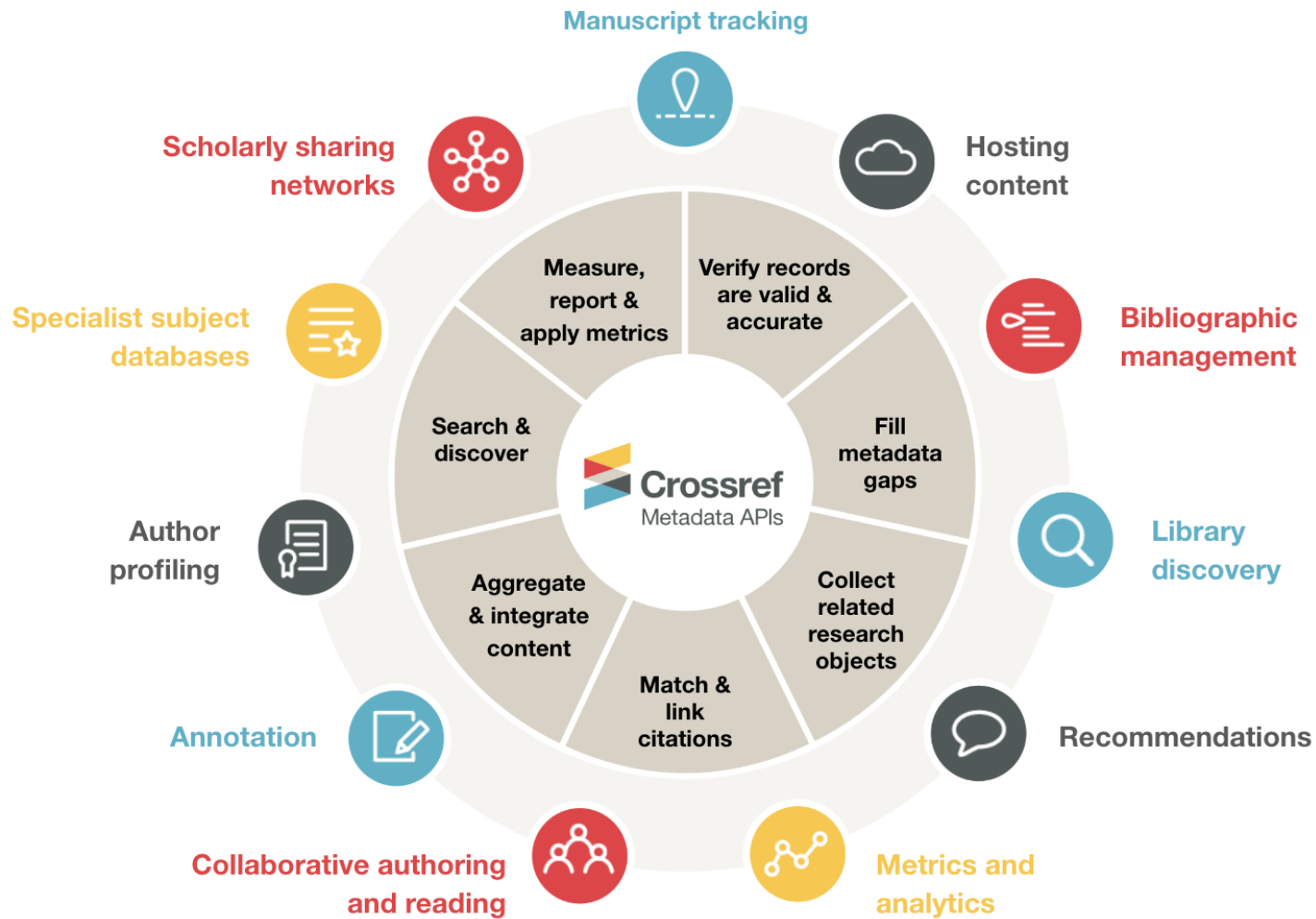
Full-text URIs (e.g. for text mining and Similarity Check)

Crossmark: updates, retractions, corrections

ORCID IDs

Recently: Peer Review reports, relations, Grant IDs

Soon... Organization IDs, CRediT



Search & Discovery

Search the metadata of **116,930,349** journal articles, books, standards, datasets & more

🔍 Title, author, DOI, ORCID iD, etc.

[Search help](#)

Search **25,411** funders connected to **5,543,927** published works with funding data

🔍 Search funders...



UNIVERSITETET I TROMSØ

TYPE

- Journal Article (381)
- Posted Content (2)

YEAR

- 2020 (85)
- 2018 (84)
- 2019 (79)
- 2017 (69)
- 2016 (35)
- 2015 (18)

[Health \(7\)](#)

[Palaeoecology](#)

[LLC \(80\)](#)

American Psychological Association (APA) (7)

🔍 Universitetet i Tromsø

SORT BY: [RELEVANCE](#) [PUBLICATION YEAR](#)

[DOWNLOAD AS CSV](#)

Evaluation of the Incredible Years Teacher Classroom Management Program in

Journal Article published 19 Sep 2019 in Scandinavian Journal of Educational Research volume 63 issue 3
Research funded by UiT The Arctic University of Norway | Norwegian Directorate of Health [grant number xx]

Authors: Merete Aasheim, Charlotte Reedtz, Bjørn Helge Handegård, Monica Martinussen, Willy-Tore Mørch

<https://doi.org/10.1080/00313831.2018.1466357> [Actions](#)

Cryptophanes for Methane and Xenon Encapsulation: A Comparative Density Functional

Journal Article published 21 Dec 2017 in The Journal of Physical Chemistry A volume 121 issue 50 on page 15000
Research funded by Norges Forskningsråd (179568) | Universitetet i Tromsø

Authors: Taya B. Demissie, Kenneth Ruud, Jørn H. Hansen

<https://doi.org/10.1021/acs.jpca.7b10595> [Actions](#)

Poleward energy transport: is the standard definition physically relevant at all latitudes?

Journal Article published Mar 2018 in Climate Dynamics volume 50 issue 5-6 on pages 1785 to 1797

Research funded by Universitetet i Tromsø (uit-phys-014) | Norges Teknisk-Naturvitenskapelige Universitet (NTNU)

Authors: Minyi Liang, Arnaud Czaja, Rune Graversen, Remi Tailleux

<https://doi.org/10.1007/s00382-017-3722-x> [Actions](#)

Prevalence of smoking before and during pregnancy and changes in this habit in a

Journal Article published Dec 2016 in Reproductive Health volume 13 issue 1

Research funded by Universitetet i Tromsø (NO) (IN-1096130)

Authors: Olga A. Kharkova, Alexandra Krettek, Andrej M. Grijbovski, Evert Nieboer, Jon Øyvind Odland

<https://doi.org/10.1186/s12978-016-0144-x> [Actions](#)

Differential gene expression related to an epigenetic memory affecting climate change

Journal Article published Jan 2011 in Plant Science volume 180 issue 1 on pages 132 to 139

Research funded by Norges Forskningsråd (1558731588611565041/140) | Universitetet i Tromsø

Authors: Igor A. Yakovlev, Daniel K.A. Asante, Carl Gunnar Fossdal, Olavi Junttila, Øystein Johnsen

<https://doi.org/10.1016/j.plantsci.2010.07.004> [Actions](#)

An amphipathic cyclic tetrapeptide scaffold containing halogenated β 2,2-amino acid

Journal Article published Oct 2018 in Journal of Peptide Science volume 24 issue 10 on page e3117

Match & link citations



Insert a Citation

Search Import Reference a Label

stellar conductivity [Search CrossRef](#)

Ame A. Wyller, 1973, **Thermal Conductivity of Partially Degenerate Magnetoplasmas in Stellar Cores**, *The Astrophysical Journal*, vol. 184, p. 517 [Edit](#) [link](#) [+ Cite](#)

S. Chapman, 1928, **The Electrical Conductivity of Stellar Matter**, *Monthly Notices of the Royal Astronomical Society*, vol. 89, no. 1, pp. 54-57 [Edit](#) [link](#) [+ Cite](#)

E.Kh. Salman, I.S. Shikin, 1993, **Flow near the critical line in the gas-dynamic model of stellar wind with thermal conductivity**, *Journal of Applied Mathematics and Mechanics*, vol. 57, no. 3, pp. 557-561 [Edit](#) [link](#) [+ Cite](#)

B. R. Durney, H. C. Spruit, 1979, **On the dynamics of stellar convection zones - The effect of rotation on the turbulent viscosity and conductivity**, *The Astrophysical Journal*, vol. 234, p. 1067 [Edit](#) [link](#) [+ Cite](#)

P. B. Fellgett, 1951, **An Exploration of Infra-red Stellar Magnitudes Using the Photo-Conductivity of Lead Sulfide**, *Monthly Notices of the Royal Astronomical Society*, vol. 112, p. 105 [Edit](#) [link](#) [+ Cite](#)

[Close](#)

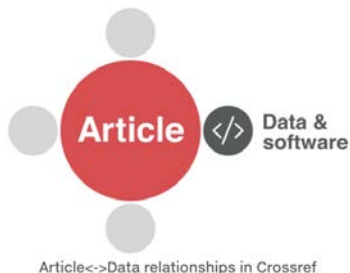
Aggregate and integrate content & verify records are valid and accurate



“Help Unpaywall identify and disambiguate over 20 million Open Access articles, and it is absolutely essential to our work. We 😊❤️👉 Crossref!” – Jason Priem, ImpactStory

Collect related research objects

“We check for the availability of articles associated with our data packages, and to verify some of our metadata. Being able to do this programmatically has revolutionized our data publication workflow.” – Elizabeth Hull, Dryad



Search

Explore Data | About ▼ | Help ▼ | Login



How it works



Login

Use your ORCID. If your institution is a [Dryad](#)



Submit

Whether or not your data are related to an



Review

Our [curators](#) will check through your



Cite

[Cite](#) and promote your data publication!

Enable collaborative projects and services



Without open metadata

ZERO HUNGER

will take longer



ROR Linking Publications to Institutions Using Open ROR IDs

ROR is a community-led project to develop an open, sustainable, usable, and unique identifier for every research organization in the world.

Institutions can have many names – or similar names.

Which UCLA is which?

UCLA David Geffen School of Medicine

UCLA School of Medicine

UCLA

Universidad Centroccidental Lisandro Alvarado

This makes it challenging to link publications and other research outputs to institutional affiliations

How do I find research from UCLA medical school?

How can our journal automate workflows for institutional OA publishing agreements?

How can I help researchers provide accurate & consistent affiliations?

Use ROR IDs for clean, consistent affiliations

 <https://ror.org/00mjfew53>

David Geffen School of Medicine at UCLA
UNIVERSITY OF CALIFORNIA, LOS ANGELES SCHOOL OF MEDICINE

WEBSITE
<http://medschool.ucla.edu/>

UNITED STATES EDUCATION

Integrate ROR IDs wherever affiliations are collected. Send affiliation metadata to Crossref and DataCite.

My Submission

Author(s)

First Name *

Rene

Last Name *

Researcher

Institutional Affiliation *

ucla school of med

Auth

ema

Universidad Centroccidental Lisandro Alvarado
University of California, Los Angeles

David Geffen School of Medicine at UCLA

UCLA Health

 <https://sandbox.orcid.org/0000-0003-0323-450X>

+ Add Author

Why ROR? How is it different from other identifiers?



- Non-commercial, fully open (CC0) registry
- Public API, data dump



- Specifically focused on research affiliations
- Includes 98K+ organizations



- Community-led project
- Supported in Crossref and DataCite metadata

DataCite Commons

<https://ror.org/00wge5k78>

University of Tromsø - The Arctic University of Norway

UiT The Arctic University of Norway, UiT Norges Arktiske Universitet, UiT Noregs Arktiske Universitet, UiT

Founded 1968

Links

[Homepage](#)

[Wikipedia](#)

[Twitter](#)

Geolocation

69° 40' 49.84" N, 18° 58' 23.28" W

[Norway](#)

[Education](#)

[DataCite Consortium Organization](#)

<https://ror.org/00wge5k78>

Other Identifiers

GRID [grid.10919.30](#)

Crossref Funder ID [10.13039/100007465](#)

ISNI [0000000122595234](#)

Wikidata [Q279724](#)

<https://commons.datacite.org>

43,953 Works



Data from: Fifty thousand years of arctic vegetation and megafaunal diet

Eske Willerslev, John Davison, Mari Moora, Martin Zobel, Eric Coissac, Mary E. Edwards, Eline D. Lorenzen, Mette Vestergård, Galina Gussarova, James Haile, Joseph Craine, Gaddy Bergmann, Ludovic Gjelly, Sanne Boessenkool, Laura S. Epp, Peter B. Pearman, Rachid Cheddadi, David Murray, Karri Anne Bråthen & Nigel Yoccoz

Version 1 of Dataset published 2014 in [DRYAD](#)

Although it is generally agreed that the arctic flora is among the youngest and least diverse on Earth, the processes that shaped it are poorly understood. Here we present 50 thousand years (kyr) of arctic vegetation history, derived from the first large-scale ancient DNA metabarcoding study of circumpolar plant diversity. For this interval we additionally explore nematode diversity as a proxy for modelling vegetation cover and soil quality, and diets of herbivorous megafaunal mammals, many of which became extinct around 10 kyr BP (before present). For much of the period investigated, arctic vegetation consisted of dry steppe tundra dominated by forbs (non-graminoid herbaceous vascular plants). During the Last Glacial Maximum (25–15 kyr BP), diversity declined markedly, although forbs remained dominant. Much changed after 10 kyr BP, with the appearance of moist tundra dominated by woody plants and graminoids. Our analyses indicate that both graminoids and forbs would have featured in megafaunal diets. As such our findings question the predominance of a late Quaternary graminoid-dominated arctic “mammoth steppe”.

DOI registered December 2, 2013 via DataCite.



1 Citation 106 Views 23 Downloads

[Dataset](#) [English](#)

<https://doi.org/10.5061/dryad.ph8s5>



Crossref Metadata?





This may be your Crossref metadata



How good is your metadata?

Find a member



Search by member

Access Participation Reports at <https://www.crossref.org/members/rep/> and you can find [documentation to help](#) on the Crossref website.

Richer metadata makes content useful.
Make sure your work can be found.

Wiley

770,977
Total registered
content items

Content type: Journal articles i

Preprints 3,972 Journal articles 739,334 Datasets 20 Conference papers 1 Books 2,415 Book chapters 25,235

Journal articles v vReferences iOpen references iORCID IDs iFunder Registry IDs iFunding award numbers iCrossmark enabled iText mining URLs iLicense URLs iSimilarity Check URLs iAbstracts i

Find a member

Learn more

Richer metadata makes content useful.
Make sure your work can be found.

UIT The Arctic University of Norway

815
Total registered
content items

Content type: Journal articles

Journal articles 815

- Book chapters
- Books
- Conference papers
- Datasets
- Journal articles
- Preprints

Journal articles

Search by title

Current content

References

1 %

Open references

100 %

ORCID IDs

31 %

Funder Registry IDs

0 %

Funding award numbers

0 %

License URLs

99 %

- All time
- Current content
- Back file

References

Percentage of content items that include reference lists in their metadata.

[Why is this important?](#)

[Where can I learn more?](#)

[How can I improve this score?](#)

83 %

tl

NAMMCO Scientific Publications

Poljarnyj vestnik

Open Science Talk

Open Science Talk

Nordic Perspectives on Open Science

Proceedings of the Northern Lights Deep Learning Workshop

Proceedings of the Northern Lights Deep Learning Workshop

Borealis – An International Journal of Hispanic Linguistics

Aurorae Borealis Studia Classica



...but maybe this?



Better metadata makes content useful!



Quick fixes

- Make your references open
- Provide license information
- Include funding information (if applicable)
- Use ROR identifiers
- Encourage authors to submit ORCID and use ORCID auto-update
- Cite data



Created by iconsmind.com
from Noun Project

Smart alone; brilliant
together

Vanessa Fairhurst
Community Outreach Manager
vfairhurst@crossref.org
@NessaFairhurst

Tusen takk!



This work is licensed under the Creative Commons Attribution 4.0 International License. To view a copy of this license, visit <http://creativecommons.org/licenses/by/4.0/> or send a letter to Creative Commons, PO Box 1866, Mountain View, CA 94042, USA.