

# Building a university Open Access scholarly publishing environment

Tereza Karlová, Lenka Hrdličková  
Czech Technical University in Prague - Central Library, Czech Republic

## MOST COMMON FAILURES BY AUTHORS

### YOUNG RESEARCHERS

**Young authors** are not good in reasoning, in discussing **positive** and **negative** aspects of their findings in compare to the cited literature. They are not good in objective evaluation of the contribution of their good work.

High-quality **experimental data** versus **low-quality** presentation.

Poor promotion of their own work, their results and contribution.

**Poor title, abstract and keywords.**

**Absence of comprehensive** literature review as a background for their work and experiments.

**Poor discussion** – absence of real discussion, poor comparison of presented outcomes with the **current trends and findings.**

The **contribution** of the experimental work is not **highlighted.**

**Incorrect references** – quantity, recency, form, self-citations.

### ALL AUTHORS

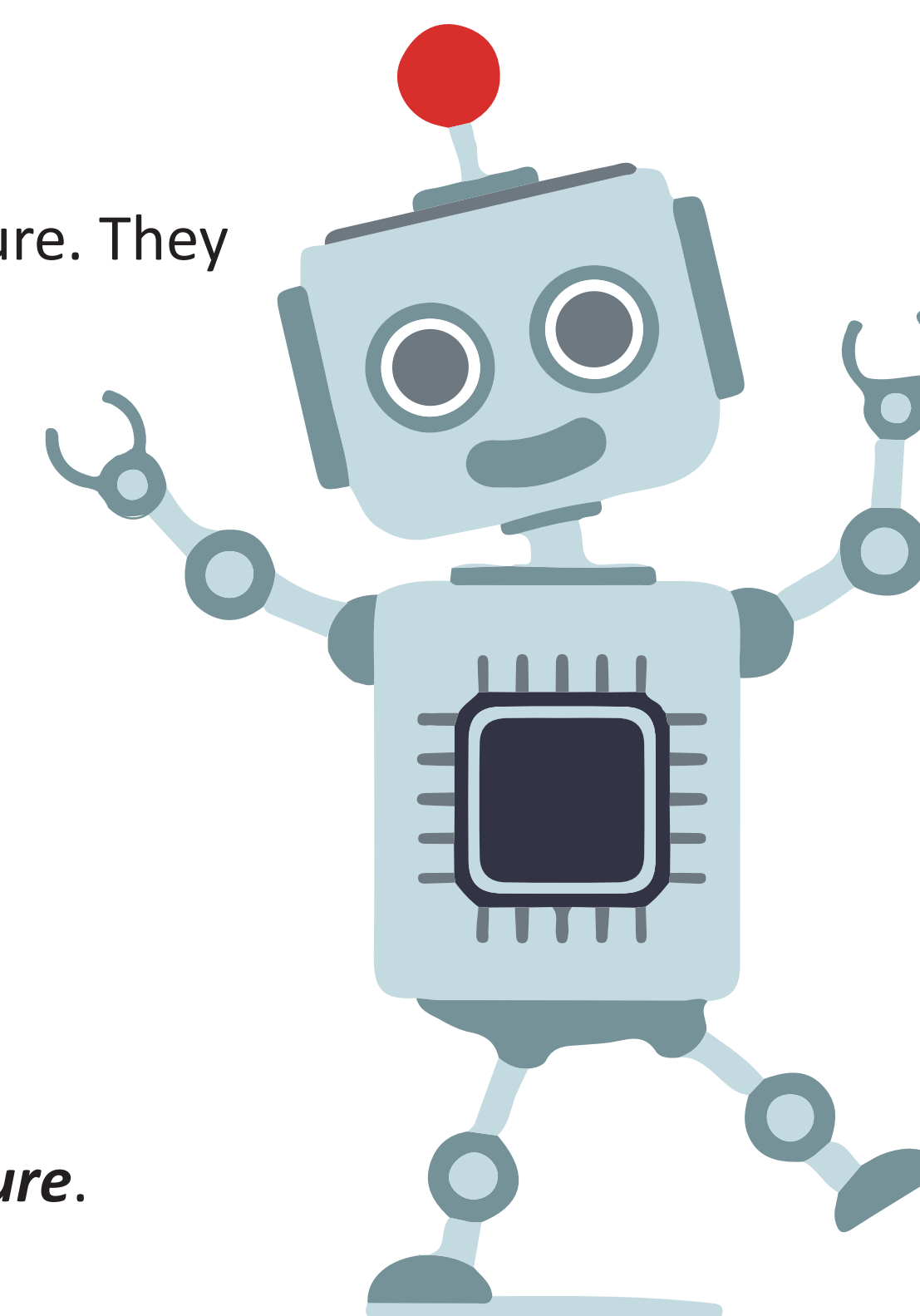
**Not reading** and not **following guide** for authors.

The submission is rather a **technical** or **laboratory** report than a research paper – **poor introduction, not enough background literature.**

Too **few cited references** as a result of proper information retrieval.

**Citing** only comprehensive **textbooks, encyclopediae, course books.**

**Self-citations**, using passages from their **earlier works** (*easily discovered by Similarity Check*).



## LIBRARY

Cooperation between editorial **office** and the **library** (*information education dept., research support dept.*), especially in terms of courses, classes, **sharing of findings** - user needs and requirements.

### TOPICS

Open Access, Research data

Predatory publishers

Copyright issues

Publication ethics

Citing

Avoiding plagiarism

Literature search

Academic writing

Author identifiers

Bibliometrics

## COOPERATION

Courses, lectures, seminars

Cooperation with library on classes for young PhD students

Cooperation with professors and university departments

Topics of interest to the academic community

Special courses for PhD students in academic writing

Special invited lectures at CTU conferences

## SYSTEMS & SERVICES

administered by the library and provided to all university units, above all to other university journals and conferences.

OJS

DOI

SIMILARITY CHECK

ORCID

REPOSITORY

HELP with meeting indexing database criteria

**FUTURE PLANS** Open Access monograph platform for various multimedia document types and contents, live monographs etc.

## EDITORIAL OFFICE

The Editorial Office as a part of the CTU's Central Library cooperates with all library units. This synergy allows library to be an integral part of the university and a beneficial partner to all researchers.

### Editorial Board

The Editorial Board is chaired by the Vice-Rector for Science, Creative Activities and PhD Studies and consists of senior researchers representing individual faculties.

### Journals:

#### Acta Polytechnica

Peer-reviewed Open Access research journal published since 1961.

Publishes original scientific research work of international community of authors from the entire spectrum of engineering disciplines and fields of mathematics and physics.

Indexed by: Web of Science ESCI, Scopus, CAS, Inspec, EBSCO, DOAJ.

#### Acta Polytechnica CTU Proceedings

Peer-reviewed Open Access conference series published since 2014.

It is focused on publishing proceedings from conferences organized or co-organized by the CTU in Prague.

Indexed by: DOAJ, just accepted to Scopus. Selected volumes are indexed by Web of Science.

## KEY EXPERIENCE

### Reasons for rejecting submissions

#### Editor feedback

Papers out of the journal scope.

Incorrectly formatted, submission does not follow the guide for authors.

Abstract in the form of Introduction, too general keywords, missing discussion.

Plagiarism detected by Similarity Check.

#### Reviewer feedback

No original contribution.

Recycled submissions.

Insufficient research methods, poor research data.

Insufficient and irrelevant discussion and conclusions.

Poor English.

Too many self-citations.